

THIS INSTRUMENT PREPARED BY  
DAVID P. LINDLEY  
OF  
**CAULFIELD and WHEELER, INC.**  
SURVEYORS - ENGINEERS - PLANNERS  
7900 GLADES ROAD, SUITE 100  
BOCA RATON, FLORIDA 33434 - (561)392-1991  
CERTIFICATE OF AUTHORIZATION NO. LB3591

# POLO LEGACY MXPD

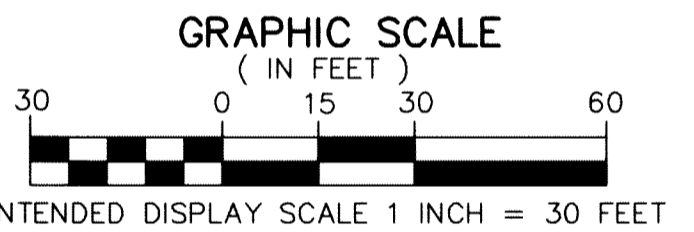
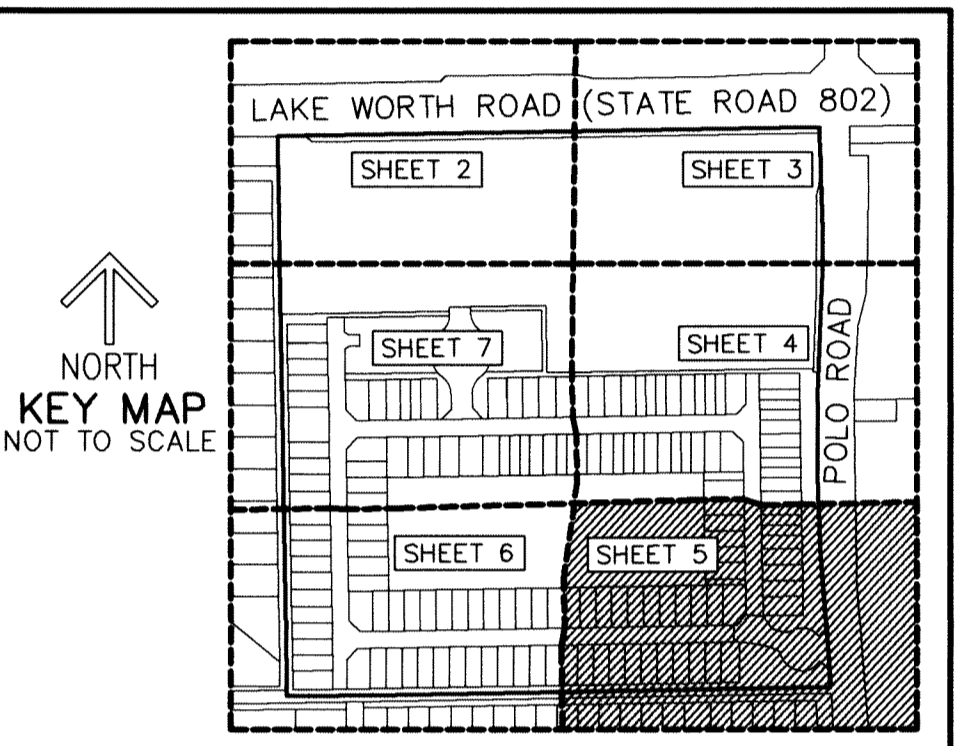
A MIXED USE PLANNED DEVELOPMENT  
BEING A REPLAT OF ALL OF TRACT 11 AND A PORTION OF TRACTS 5, 6 AND 12, BLOCK 28,  
TOGETHER WITH THE NORTH 15 FEET OF THE 30 FOOT RIGHT-OF-WAY SOUTH OF AND ADJACENT TO SAID  
TRACTS 11 AND 12, BLOCK 28, THE PALM BEACH FARMS CO. PLAT NO. 3,  
AS RECORDED IN PLAT BOOK 2, PAGE 45 THROUGH 54 OF THE PUBLIC RECORDS OF PALM BEACH COUNTY, FLORIDA,  
LYING IN SECTION 29, TOWNSHIP 44 SOUTH, RANGE 42 EAST, PALM BEACH COUNTY, FLORIDA

**NOTES**  
**COORDINATES, BEARINGS AND DISTANCES**  
COORDINATES SHOWN ARE GRID  
DATUM = NAD 83 (1990 ADJUSTMENT)  
ZONE = FLORIDA EAST  
LINEAR UNIT = US SURVEY FEET  
COORDINATE SYSTEM 1983 STATE PLANE  
TRANSVERSE MERCATOR PROJECTION  
ALL DISTANCES ARE GROUND UNLESS OTHERWISE NOTED  
SCALE FACTOR = 1.0000236  
GROUND DISTANCE X SCALE FACTOR = GRID DISTANCE  
BEARINGS AS SHOWN HEREON ARE GRID DATUM,  
NAD 83 (1990 ADJUSTMENT), FLORIDA EAST ZONE.

142

SHEET 5 OF 7

## MATCH LINE SHEET 4



- LEGEND/ABBREVIATIONS**
- CL - CENTERLINE
  - Δ - DELTA (CENTRAL ANGLE)
  - CB - CHORD BEARING
  - CD - CHORD DISTANCE
  - DE - DRAINAGE EASEMENT
  - E - EASTING (WHEN USED WITH COORDINATES)
  - L - ARC LENGTH
  - LB - LICENSED BUSINESS
  - LMAE - LAKE MAINTENANCE ACCESS EASEMENT
  - LME - LAKE MAINTENANCE EASEMENT
  - L.W.D.D. - LAKE WORTH DRAINAGE DISTRICT
  - MXPD - MIXED USE PLANNED DEVELOPMENT
  - N - NORTHING (WHEN USED WITH COORDINATES)
  - O.R.B. - OFFICIAL RECORD BOOK
  - P.B.C.U. - PALM BEACH COUNTY UTILITY EASEMENT
  - PRAS - PRIVATE RESIDENTIAL ACCESS STREET
  - PC - POINT OF CURVATURE
  - PT - POINT OF TANGENCY
  - PNT - POINT OF NON-TANGENCY
  - R - RADIUS
  - R/W - RIGHT-OF-WAY
  - UE - UTILITY EASEMENT
  - WMAE - WATER MANAGEMENT ACCESS EASEMENT
  - ◻ - DENOTES SET PERMANENT REFERENCE MONUMENT  
4" x 4" x 24" CONCRETE MONUMENT WITH ALUMINUM DISK STAMPED "C&W PRM LB3591"
  - - DENOTES SET PERMANENT CONTROL POINT  
NAIL AND METAL DISK STAMPED "PCP LB3591"
  - △ - DENOTES HORIZONTAL CONTROL POINT
  - ▲ - DENOTES SET PERMANENT REFERENCE MONUMENT  
NAIL AND DISC STAMPED "PRM" LB 3591

